



**Class I, Div. 1 & 2, Groups B,C,D
Class I, Zones 1 & 2, Groups IIB+H₂, IIA
Class II, Div. 1 & 2, Groups E,F,G
Class III, Div. 1 & 2
NEMA 3, 4, 4x, 7(B,C,D), 9(E,F,G)**

UL #UL1203-Explosion Proof and Dust-Ignition-Proof Electrical Equipment For Use In Hazardous (Classified) Locations. File #E83969

SR #C22.2 NO. 30-M1986-Explosion Proof Enclosures For Use In Class I Hazardous Locations. File #LR11714

FEATURES-SPECIFICATIONS



Applications

- Locations such as petroleum refineries, chemical and petroleum plants with indoor and outdoor processes
- Motor control and circuit protection in locations made hazardous due to the presence of flammable gases or vapors, combustible dust, or easily ignitable fibers and flyings, and areas which are subject to corrosion, weather and dampness
- To provide overcurrent and short circuit protection of service entrance, feeder or branch circuits, lighting, heating, appliance and motor circuits
- To provide line disconnect means

Features

- Copper-free, cast aluminum construction (less than 4/10 of 1%)
- High strength, lighter in weight, corrosion resistant
- Hinged Cover is standard
- More Wiring Room. Meets the latest NEC/CEC wire bending requirements for circuit breaker enclosures

- Ductile Mounting Lugs. Lugs are made of ductile aluminum alloy to adjust to irregular mounting surfaces without damage to enclosure
- Universal Mounting Pan. Sheet aluminum pan is pre-drilled to facilitate easy field installation of major circuit breaker brands. Provisions for grounding supplied as standard
- Conduit Openings Supplied. Standard conduit openings include power conduit top and bottom and a plugged opening suitable for field installation of drain and breather. Special conduit openings can be supplied at factory, or can be field installed
- Breaker Handle. Provisions for lock "ON" or "OFF" positions with up to three padlocks. Spring loaded to prevent damage of breaker toggle and provides positive handle alignment. "O" ring on shaft to prevent water seeping into enclosure
- Recessed Flange Notches. Flanges are notched to allow for easier cover opening with prying instrument without flange damage

- Gasketed Flange. Nitrile (BUNA-N) "O" ring gasket is located inside cover bolt circle to prevent water seeping into enclosure
- Quick Release, Captivated Cover. Bolts of 316 Grade Stainless Steel Triple lead bolts require only 3-1/2 turns to disengage

Material/Finish

- Enclosure: Copper-free, cast aluminum (less than 4/10 of 1%)
- Cover Bolts: 316 grade stainless steel
- Mounting Pan: Sheet aluminum
- Handle Mechanism: Cast aluminum with stainless steel shaft and hardware
- Hinges: Aluminum with stainless steel hardware
- Aluminum lacquer paint finish is standard, with special epoxy finish available. See page DE6


FEATURES-SPECIFICATIONS

B7C CIRCUIT BREAKER ENCLOSURES				
ENCLOSURE ONLY CATALOG NUMBER	WILL ACCEPT THE FOLLOWING CIRCUIT BREAKERS:			
	MANUFACTURER	FRAME SIZE	CIRCUIT BREAKER TYPE	MAX. AMP
B7CA	CUTLER-HAMMER/WESTINGHOUSE	F	EHD, FDB, FD, HFD, FDC	100
	GENERAL ELECTRIC	E150	TEB, TED, THED, TEL	100
	ITE - SIEMENS	ED	ED2, ED4, ED6, HED4, HED6	90
	SQUARE D	F	FAL, FHL, FCL	100
B7CB	CUTLER-HAMMER/WESTINGHOUSE	F	EHD, FDB, FD, HFD, FDC	150
	GENERAL ELECTRIC	E150	TEB, TED, THED, TEL	150
	ITE - SIEMENS	ED	ED2, ED4, ED6, HED4, HED6	125
B7CC	CUTLER-HAMMER/WESTINGHOUSE	J	JD, JDB, JDC, HJD	250
	GENERAL ELECTRIC	F225	TFJ, TFK, THFK, TFL	225
	SQUARE D	K	KAL, KHL, KCL	250
B7CD	CUTLER-HAMMER/WESTINGHOUSE	K	DK, KDB, KD, HKD, KDC	400
	GENERAL ELECTRIC	J600	TJJ, TJK4, THJK4	400
	ITE - SIEMENS	FD	FXD6 FD6, HFD6, CFD6	250
	ITE - SIEMENS	JD	JXD2, JXD6, JD6, HJD6, HHJD6, CJD6	400
	SQUARE D	L	LAL, LHL	400
B7CE	CUTLER-HAMMER/WESTINGHOUSE	L	LDB, LD, HLD, LDC	600
	GENERAL ELECTRIC	J600	TJK6, THJK6	600
	TE - SIEMENS	LD	LXD6, LD6, HLD6, HHLD6, CLD6	600
	SQUARE D	LC	LCL	600
B7CF	CUTLER-HAMMER/WESTINGHOUSE	N	ND, HND, NDC	1200
	GENERAL ELECTRIC	K1200	TKM8, THKM8, TKM12, THKM12	1200
	ITE - SIEMENS	MD	MD6, MXD6, HMXD6, HMD6, CMD6	800
	ITE - SIEMENS	ND	ND6, NXD6, HNXD6, CND6	1200
	SQUARE D	M	MAL, MHL	1000

NOTE: Enclosure includes mounting pan which is pre-drilled to accept circuit breakers illustrated above.

Mounting screw hardware for circuit breaker is not supplied with enclosure and must be furnished by supplier of circuit breaker.



B7C ENCLOSURE WITH CIRCUIT BREAKER INSTALLED							
BREAKER AMPERAGE	MAXIMUM VOLTAGE	CATALOG NUMBER			CATALOG NUMBER		
		CUTLER-HAMMER/WESTINGHOUSE BREAKERS			SQUARE D BREAKERS		
		FRAME SIZE	2 POLE	3 POLE	FRAME SIZE	2 POLE	3 POLE
15	480	EHD	B7CA-WEHD-42015	B7CA-WEHD-43015	FAL4	B7CA-SFAL-42015	B7CA-SFAL-43015
15	600	FDB	B7CA-WFDB-62015	B7CA-WFDB-63015	FAL6	B7CA-SFAL-62015	B7CA-SFAL-63015
20	480	EHD	B7CA-WEHD-42020	B7CA-WEHD-43020	FAL4	B7CA-SFAL-42020	B7CA-SFAL-43020
20	600	FDB	B7CA-WFDB-62020	B7CA-WFDB-63020	FAL6	B7CA-SFAL-62020	B7CA-SFAL-63020
30	480	EHD	B7CA-WEHD-42030	B7CA-WEHD-43030	FAL4	B7CA-SFAL-42030	B7CA-SFAL-43030
30	600	FDB	B7CA-WFDB-62030	B7CA-WFDB-63030	FAL6	B7CA-SFAL-62030	B7CA-SFAL-63030
40	480	EHD	B7CA-WEHD-42040	B7CA-WEHD-43040	FAL4	B7CA-SFAL-42040	B7CA-SFAL-43040
40	600	FDB	B7CA-WFDB-62040	B7CA-WFDB-63040	FAL6	B7CA-SFAL-62040	B7CA-SFAL-63040
50	480	EHD	B7CA-WEHD-42050	B7CA-WEHD-43050	FAL4	B7CA-SFAL-42050	B7CA-SFAL-43050
50	600	FDB	B7CA-WFDB-62050	B7CA-WFDB-63050	FAL6	B7CA-SFAL-62050	B7CA-SFAL-63050
60	480	EHD	B7CA-WEHD-42060	B7CA-WEHD-43060	FAL4	B7CA-SFAL-42060	B7CA-SFAL-43060
60	600	FDB	B7CA-WFDB-62060	B7CA-WFDB-63060	FAL6	B7CA-SFAL-62060	B7CA-SFAL-63060
70	480	EHD	B7CA-WEHD-42070	B7CA-WEHD-43070	FAL4	B7CA-SFAL-42070	B7CA-SFAL-43070
70	600	FDB	B7CA-WFDB-62070	B7CA-WFDB-63070	FAL6	B7CA-SFAL-62070	B7CA-SFAL-63070
80	480	EHD	B7CA-WEHD-42080	B7CA-WEHD-43080	FAL4	B7CA-SFAL-42080	B7CA-SFAL-43080
80	600	FDB	B7CA-WFDB-62080	B7CA-WFDB-63080	FAL6	B7CA-SFAL-62080	B7CA-SFAL-63080
90	480	EHD	B7CA-WEHD-42090	B7CA-WEHD-43090	FAL4	B7CA-SFAL-42090	B7CA-SFAL-43090
90	600	FDB	B7CA-WFDB-62090	B7CA-WFDB-63090	FAL6	B7CA-SFAL-62090	B7CA-SFAL-63090
100	480	EHD	B7CA-WEHD-42100	B7CA-WEHD-43100	FAL4	B7CA-SFAL-42100	B7CA-SFAL-43100
100	600	FDB	B7CA-WFDB-62100	B7CA-WFDB-63100	FAL6	B7CA-SFAL-62100	B7CA-SFAL-63100
125	600	FDB	B7CB-WFDB-62125	B7CB-WFDB-63125	—	—	—
125	600	JDB	B7CC-WJDB-62125	B7CC-WJDB-63125	KAL	B7CC-SKAL-62125	B7CC-SKAL-63125
150	600	FDB	B7CB-WFDB-62150	B7CB-WFDB-63150	—	—	—
150	600	JDB	B7CC-WJDB-62150	B7CC-WJDB-63150	KAL	B7CC-SKAL-62150	B7CC-SKAL-63150
175	600	JDB	B7CC-WJDB-62175	B7CC-WJDB-63175	KAL	B7CC-SKAL-62175	B7CC-SKAL-63175
200	600	JDB	B7CC-WJDB-62200	B7CC-WJDB-63200	KAL	B7CC-SKAL-62200	B7CC-SKAL-63200
225	600	JDB	B7CC-WJDB-62225	B7CC-WJDB-63225	KAL	B7CC-SKAL-62225	B7CC-SKAL-63225
250	600	JDB	B7CC-WJDB-62250	B7CC-WJDB-63250	KAL	B7CC-SKAL-62250	B7CC-SKAL-63250
250	600	KD	B7CD-WKD-62250	B7CD-WKD-63250	LAL	B7CD-SLAL-62250	B7CD-SLAL-63250
300	600	KD	B7CD-WKD-62300	B7CD-WKD-63300	LAL	B7CD-SLAL-62300	B7CD-SLAL-63300
350	600	KD	B7CD-WKD-62350	B7CD-WKD-63350	LAL	B7CD-SLAL-62350	B7CD-SLAL-63350
400	600	KD	B7CD-WKD-62400	B7CD-WKD-63400	LAL	B7CD-SLAL-62400	B7CD-SLAL-63400
400	600	LD	B7CE-WLD-62400	B7CE-WLD-63400	—	—	—
500	600	LD	B7CE-WLD-62500	B7CE-WLD-63500	LCL	B7CE-SLCL-62500	B7CE-SLCL-63500
600	600	LD	B7CE-WLD-62600	B7CE-WLD-63600	LCL	B7CE-SLCL-62600	B7CE-SLCL-63600
600	600	ND	B7CF-WND-62600	B7CF-WND-63600	MAL	B7CF-SMAL-62600	B7CF-SMAL-63600
700	600	ND	B7CF-WND-62700	B7CF-WND-63700	MAL	B7CF-SMAL-62700	B7CF-SMAL-63700
800	600	ND	B7CF-WND-62800	B7CF-WND-63800	MAL	B7CF-SMAL-62800	B7CF-SMAL-63800
1000	600	ND	B7CF-WND-621000	B7CF-WND-631000	MAL	B7CF-SMAL-621000	B7CF-SMAL-631000
1200	600	ND	B7CF-WND-621200	B7CF-WND-631200	MAL	—	—

NOTE: See page DE6 of this brochure for dimensional information and circuit breaker interrupting information.

TECHNICAL DATA INTERRUPTING CAPACITY RATINGS (SYMMETRICAL AMPERES)				
BREAKER FRAME CUTLER-HAMMER/ WESTINGHOUSE	VOLTS AC			VOLTS DC
	240	480	600	250
EHD	18,000	14,000	—	10,000
FDB	18,000	14,000	14,000	10,000
JDB	65,000	25,000	18,000	10,000
KD	65,000	35,000	25,000	10,000
LD	65,000	35,000	25,000	22,000
ND	65,000	50,000	25,000	—
SQUARE D				
FAL4	25,000	18,000	—	10,000
FAL6	25,000	18,000	14,000	10,000
KAL	42,000	25,000	22,000	10,000
LAL	42,000	30,000	22,000	10,000
LCL	100,000	65,000	35,000	—
MAL	42,000	30,000	22,000	14,000

Consult factory for requirements on higher interrupting rated breakers.

Dimensions

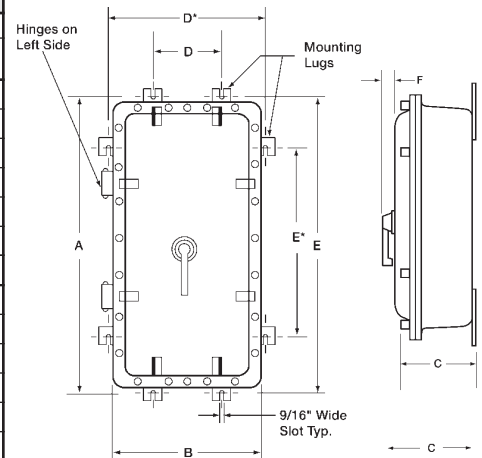


Figure 1

ACCESSORIES / OPTIONS*	
CATALOG NUMBER	DESCRIPTION
SU3 ^①	Drain & breather NEMA 3, 7CD, 9EFG
SU3B ^{①②}	Drain & breather NEMA 3, 7BCD, 9EFG
B7CGRND	Grounding lug kit
B7C-SN1	Solid neutral 150 AMP
B7C-SN2	Solid neutral 250 AMP
B7C-SN3	Solid neutral 600 AMP
B7C-SN4	Solid neutral 1200 AMP
B7SF	Special epoxy finish
B7SPNPT	Change standard conduit openings

*To be ordered as separate item with notation on order for assembly into enclosure.

NOTE: Modifications to Internal Circuit Breaker such as Shunt Trip, Auxiliary Switches, Alarm Switch and Undervoltage Release Mechanism are available and should be ordered by description.

① Installation of Drain & Breather will void the NEMA 4-4x rating.

② Not CSA

Dimensions

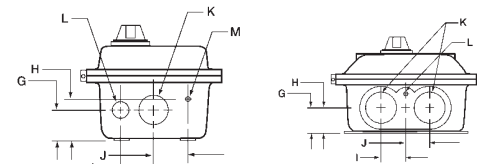


Figure 2

Figure 3

B7C DIMENSIONS													
CATALOG NUMBER	USE FIGURES	DIMENSIONS											
		A	B	C	D	D*	E	E*	F	G	H	I	J
B7CA	1, 2	18"	11"	9-1/8"	3-5/8"	N/A	16-3/8"	N/A	1-3/4"	2-15/16"	3-11/16"	2-3/8"	2-1/8"
B7CB	1, 2	26-1/4"	12-1/2"	10-3/4"	5"	N/A	24-5/8"	N/A	1-3/4"	4-5/16"	5-3/4"	2-3/4"	2-1/2"
B7CC	1, 2	34-1/4"	16-1/2"	11-1/2"	9"	N/A	32-5/8"	N/A	1-3/4"	4-11/16"	6-1/4"	4"	3-3/4"
B7CD	1, 2	34-1/4"	16-1/2"	11-1/2"	9"	N/A	32-5/8"	N/A	2-5/8"	4-11/16"	6-1/4"	4"	3-3/4"
B7CE	1, 3	45-3/8"	17-1/2"	9-5/8"	N/A	15-1/4"	N/A	33"	2-5/8"	3-3/16"	4-1/2"	2-3/4"	2-3/4"
B7CF	1, 3	62-1/4"	20-1/4"	15"	N/A	18-1/2"	N/A	43-1/2"	2-5/8"	5-3/8"	7-3/8"	3-1/2"	3-1/2"

DIMENSIONS (CONTINUED)						
CATALOG NUMBER	USE FIGURES	CONDUIT OPENINGS TOP & BTM. (NPT)			EST. ENCL. WT. (LBS.)	
		K	L	M		
B7CA	1, 2	1-1/2"	3/4"	1/2"	46	
B7CB	1, 2	2"	1"	1/2"	80	
B7CC	1, 2	3"	1"	1/2"	155	
B7CD	1, 2	3"	1"	1/2"	155	
B7CE	1, 3	3"	1/2"	N/A	215	
B7CF	1, 3	4"	1/2"	N/A	540	

