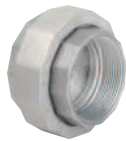




GUF-2



GUF-8



GUM-2



GUML-2



UNF2

Female to Female



UNY4

Male to Female



UNY2



GUML-2M

90° Elbow Union

- GUF/GUM/UNF/UNY 1/2", 3/4", & 1" Class I, Div. 1 & 2, Groups A,B,C,D Class I, Zone I, IIC, IIB, IIA Class II, Div. 1 & 2, Groups E,F,G Class III
- GUF/GUM/UNF/UNY 1-1/4" through 4" Class I, Div. 1 & 2, Groups C,D Class I, Zone I, IIB, IIA Class II, Div. 1 & 2, Groups E,F,G Class III

UL Listed File No. E 10514

SP Certified File No. LR11716

### FEATURES-SPECIFICATIONS

#### Applications

- UNY and UNF unions are used to connect two pieces of conduit or attach conduit to junction boxes, fittings, or devices
- Permits removal of equipment without turning or removal of conduit

#### Features

- Threaded for rigid conduit or IMC
- Tapered threads (NPT)
- Strong and durable construction

#### Material/Finish

**Copper-free Aluminum** — 1/2" - 4" (less than 4/10 of 1%)

- Natural Finish

**Iron** — 1-1/4" - 4"

**Steel** — 1/2", 3/4", 1"

- Zinc electro-plate

#### Third-Party Standards

- UL Standard 886
- CSA Standard C22.2 No. 30

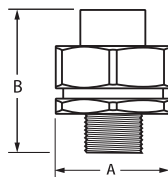
| FEMALE TO FEMALE |              |          |             |              |
|------------------|--------------|----------|-------------|--------------|
| CATALOG NUMBER   |              | HUB SIZE | DIMENSIONS  |              |
| KILLARK ALUM.    | DURALOY IRON |          | A DIAMETER  | B LENGTH     |
| GUF-1Ⓢ           | UNF1Ⓢ        | 1/2"     | 1-1/2"(38)  | 1-7/8"(48)   |
| GUF-2Ⓢ           | UNF2Ⓢ        | 3/4"     | 1-3/4"(44)  | 1-15/16"(49) |
| GUF-3Ⓢ           | UNF3Ⓢ        | 1"       | 2"(51)      | 2-7/16"(62)  |
| GUF-4            | UNF4         | 1-1/4"   | 2-3/8"(60)  | 2-1/2"(63)   |
| GUF-5            | UNF5         | 1-1/2"   | 2-5/8"(67)  | 2-1/2"(63)   |
| GUF-6            | UNF6         | 2"       | 3-1/4"(82)  | 2-5/8"(67)   |
| GUF-7            | UNF7         | 2-1/2"   | 4-1/2"(114) | 3-3/32"(78)  |
| GUF-8            | UNF8         | 3"       | 5-3/8"(136) | 3-1/16"(78)  |
| GUF-9            | UNF9         | 3-1/2"   | 6-1/4"(159) | 3-9/16"(90)  |
| GUF-0            | UNF0         | 4"       | 6-1/4"(159) | 3-9/16"(90)  |

| MALE TO FEMALE |              |          |             |              |
|----------------|--------------|----------|-------------|--------------|
| KILLARK ALUM.  | DURALOY IRON | HUB SIZE | A DIAMETER  | B LENGTH     |
| GUM-1Ⓢ         | UNY1Ⓢ        | 1/2"     | 1-1/2"(38)  | 2-3/16"(55)  |
| GUM-2Ⓢ         | UNY2Ⓢ        | 3/4"     | 1-3/4"(44)  | 2-3/8"(60)   |
| GUM-3Ⓢ         | UNY3Ⓢ        | 1"       | 2"(51)      | 2-3/4"(70)   |
| GUM-4          | UNY4         | 1-1/4"   | 2-3/8"(60)  | 2-15/16"(75) |
| GUM-5          | UNY5         | 1/2"     | 2-5/8"(67)  | 2-15/16"(75) |
| GUM-6          | UNY6         | 2"       | 3-1/4"(82)  | 3-1/4"(82)   |
| GUM-7          | UNY7         | 2-1/2"   | 4-1/2"(114) | 4-9/32"(109) |
| GUM-8          | UNY8         | 3"       | 5-3/8"(136) | 4-1/4"(108)  |
| GUM-9          | UNY9         | 3-1/2"   | 6-1/4"(159) | 4-1/2"(114)  |
| GUM-0          | UNY0         | 4"       | 6-1/4"(159) | 4-1/2"(114)  |

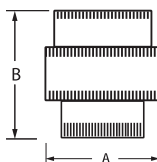
| 90° ANGLE UNION |              |          |            |            |            |
|-----------------|--------------|----------|------------|------------|------------|
| CATALOG NUMBER  |              | HUB SIZE | DIMENSIONS |            |            |
| KILLARK ALUM.   | DURALOY IRON |          | A          | B          | C          |
| GUML-1          | GUML-1M      | 1/2"     | 2-1/2"(64) | 1-1/2"(38) | 1-3/4"(44) |
| GUML-2          | GUML-2M      | 3/4"     | 2"(51)     | 1-1/2"(38) | 1-5/8"(42) |

Ⓢ UL & CSA suitable for Class I, Groups A, B, C, D.

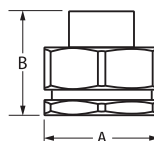
#### Dimensions



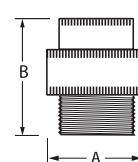
UNY



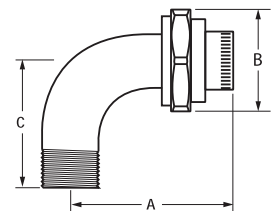
GUF



UNF



GUM



GUML



**KILLARK®**