



UL Listed - File E3397
 NSF Certified - File LR11852
 See files for details or call Killark.

FEATURES-SPECIFICATIONS

Applications

- Accommodates wiring devices and provides opening to splice, tap, or pull conductors
- Provide access to conductors for maintenance and future system changes

Features

- The fittings on this page takes single gang covers listed on pages F41-F43
- FSQ and FDQ series boxes are made with individual cover openings so any combination of devices may be assembled
- Any assembly is suitable for wet and damp locations when it consists of these boxes and a cover suitable for wet and damp locations

- To specify conduit opening combination select the letter on the sketch which indicates the position of the opening desired. Follow this letter with the symbol indicating the type of opening-threaded, threadless or union

Maximum Conduit Opening Size
 FS-1/2" thru 1"
 FD-1/2" thru 1-1/2"

Material/Finish
Copper-free Aluminum
 (less than 4/10 of 1%)

- Electrostatically applied powder coating

FSQ/FDQ DRILLED AND TAPPED DEVICE BOXES						
SERIES	A	B	C	D	E	H
FSQ	3-3/4"(95)	3-9/16"(90)	1/4"(6)	4-9/16"(116)	2-13/16"(71)	2"(51)
2FSQ	5-7/8"(149)	4-1/4"(108)	5/16"(8)	4-7/8"(124)	6-7/16"(164)	2"(51)
3FSQ	5-7/8"(149)	7-9/16"(192)	5/16"(8)	4-15/16"(125)	9-13/16"(249)	2-7/8"(73)
FDQ	3-3/4"(95)	3-9/16"(90)	1/4"(6)	4-9/16"(116)	2-13/16"(71)	2-7/8"(73)
2FDQ	6-3/16"(157)	4-7/16"(113)	5/16"(8)	4-7/8"(124)	6-7/16"(164)	2-7/8"(73)
3FDQ	5-7/8"(149)	7-9/16"(192)	5/16"(8)	4-15/16"(125)	9-13/16"(249)	2-7/8"(73)
4FDQ	5-7/8"(149)	10-13/16"(275)	5/16"(8)	4-15/16"(125)	13-1/8"(333)	2-7/8"(73)

Conduit Opening Data

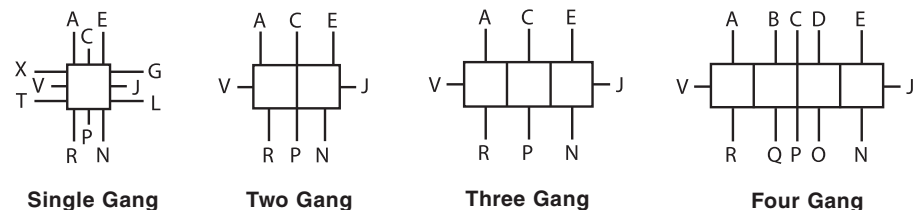
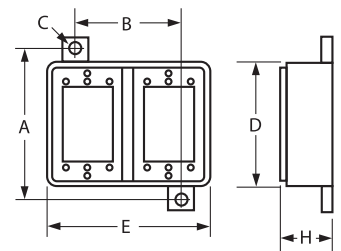
- To specify conduit openings select the letter on these sketches which indicates the position desired. Follow this letter with the symbol indicating the type and size.

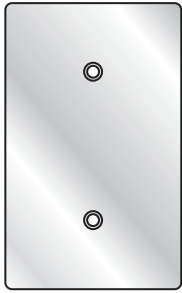
Example: 2FS-A2-E2-J13

- All conduit openings will be evenly spaced. When they are to be more accurately located, submit a sketch with spacing dimensions.
- Dimensions should be oriented from centerlines of body and outside back of body.
- FS and FSQ box will take drilled and tapped openings thru 1".
- FD and FDQ box will take drilled and tapped openings thru 1-1/2".

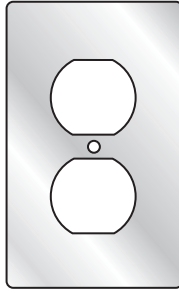
FS/FD/FSQ/FDQ CONDUIT OPENING AND SYMBOL IDENTIFICATION		
FOR CONDUIT SIZE	THREADED SYMBOL NUMBER	UNION [Ⓞ] SYMBOL NUMBER
1/2"	1	11
3/4"	2	12
1"	3	13
1-1/4"	4	14
1-1/2"	5	15

[Ⓞ] Union hubs are supplied by using a drilled and tapped opening with GUM Series union on 1/2", 3/4", 1", 1-1/4" and 1-1/2" sizes.

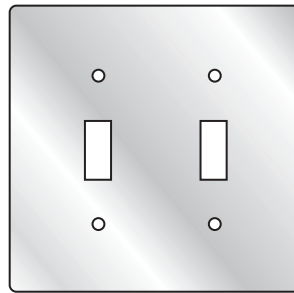




1FB Type



1FA Type



2FT Type

UL Listed File No. E 3397
 SP Certified File No. LR11852

FEATURES-SPECIFICATIONS

- Stamped metallic covers with or without electrostatically applied powder coating
- Gaskets to be ordered separately

F

SINGLE GANG		
CATALOG NUMBER		
WITH COATING	WITHOUT COATING	
Blank for Single Gang Boxes 1FBC	1FB	
1 Toggle Switch 1FTC	1FT	
1 Duplex Receptacle 1FAC	1FA	
1-13/32" Opening Round Receptacle 1FRC	1FR	
1-5/8" Opening Round Receptacle 1FGC	1FG	

TWO GANG		
CATALOG NUMBER		
WITH COATING	WITHOUT COATING	
Blank for Two Gang Boxes 2FBC	2FB	
2 Toggle Switches 2FTC	2FT	
2 Duplex Receptacles 2FAC	2FA	
Toggle Switch & Duplex Receptacle 2FTAC	2FTA	
1-13/32" Openings 2 Round Receptacles 2FRC	2FR	
1-5/8" Opening Round 2 Round Receptacles 2FGC	2FG	

THREE GANG		
CATALOG NUMBER	DESCRIPTION	
3FB	Blank for 3 Gang Boxes	
3FT	3 Toggle Switches	
3FA	3 Duplex Receptacles	

REPLACEMENT GASKETS FOR COVERS (NEOPRENE RUBBER)		
CATALOG NUMBER	DESCRIPTION	
FSRG	Neoprene Gaskets for Single Gang Boxes	
2FSRG	Neoprene Gaskets for 2 Gang Boxes	
3FSRG	Neoprene Gaskets for 3 Gang Boxes	



FZ8647



FCL-GF Type



FST Type

UL Listed File No. E 3397
 NSF Certified File No. LR11852

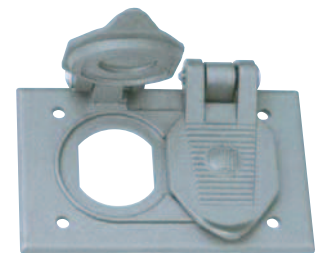
FEATURES-SPECIFICATIONS

- Cast metallic covers with electrostatically applied powder coating

CAST DEVICE COVERS— SINGLE GANG (GASKETS INCLUDED)	
CATALOG NUMBER	DESCRIPTION
FSBC	Blank for Single Gang Boxes
FSBCM	Iron Blank for Single Gang Boxes
FZ8648	Square Toggle Lock in ON or OFF Position
FZ8647	Square Toggle (Long Throw — Such as Manual Starters)
FST	1 Toggle Switch
FSPT	For Toggle Switch
FSTG	Toggle Switch Guarded

CAST DEVICE COVERS— SINGLE GANG (GASKETS INCLUDED)	
CATALOG NUMBER	DESCRIPTION
FCLA	Duplex Receptacle
FCLT	Toggle Switch
FCLR	Round Receptacle 1.406" Dia.
FCLG	Round Receptacle 1.625" Dia.
FCLM	Round Receptacle 1.750" Dia.
FCLN	Round Receptacle 2.156" Dia.
FCL-GF	Device Cover for Most Manufacturers' GFI Devices Includes Gaskets and Screws
FCL-VG	Replacement Vellumoid Gasket

CAST DEVICE COVERS—TWO AND THREE GANG (GASKETS INCLUDED)	
CATALOG NUMBER	DESCRIPTION
2FSBC	Blank for 2 Gang Boxes
2FSBCM	Iron Blank for 2 Gang Boxes
2FST	2 Toggle Switches
3FST	3 Toggle Switches
3FSBC	Blank for 3 Gang Boxes



FCLA2

NEW-Duplex Wall Plate for horizontal mounting on FS/FD Boxes. Cast aluminum, gasketed and self-closing. Listed for wet locations with cover open in continuous use.



FCL-GF



FZ-8647



PL

FEATURES-SPECIFICATIONS

FCL

Device Covers
(For GFI Receptacles)

Applications

- Use in dirty, dusty or corrosive areas
- Indoor/outdoor applications
- Where devices need physical protection

Features

- May be used with several different manufacturers' GFI devices
- Mounts on all FS, FD, FSQ and FDQ Series boxes (single opening)
- Snap type lid. UL/CSA suitable for wet locations.
- Gaskets included

CATALOG NUMBER	ITEM
FCL-GF	Device cover includes gaskets and screws
FCL-VG	Replacement Vellumoid gasket

FZ

Applications

- Suitable for NEMA 3 locations
- Areas where dust or dirt are a problem
- With standard toggle switches or manual motor starters

Features

- Copper-free aluminum
- Gaskets included
- Three toggle operator choices
- Lock "ON" or "OFF" provision standard
- Stainless steel screws
- Mounts on all FS, FD, FSQ and FDQ Series boxes (single opening)

CATALOG NUMBER	TYPE OF TOGGLE SWITCH HANDLE
FZ8648	Square toggle
FZ8647	Square toggle (Long throw-such as manual starters)
FZ	Round toggle

PL

Applications

- Wet and damp locations
- Areas where dirt, dust or corrosion is a problem
- Washdown areas such as food processing plants or dairies

Features

- Non corrosive yellow polyethylene ring
- Molded neoprene boot on plug

CATALOG NUMBER	NEMA CONFIGURATION AND RATING
PL-7	Cord diameter .375(9)/.625(16)

Not CSA approved.

UL Listed - File E3397
SP Certified - File LR11852

UL Listed - File E3397
SP Certified - File LR11852