



LB TYPE



C TYPE

- Suitable for wet locations when used with gasketed covers.
- Federal Specification W-C-586D / A-A 50563.
- Suitable for use in hazardous location applications when installed according to NEC Articles 501.10(b), Class I, Div. 2, (Suitable for use in Class I Zone 2 applications) 502.10, and 503.10.



FEATURES-SPECIFICATIONS

Applications

- Mogul fittings are for use with rigid and IMC raceways
- Use where standard conduit bodies do not provide adequate access and wiring area for the pulling of large and heavy conductors
- For right angle bends where splices, pulls and taps are needed in a weather-proof chamber

Features

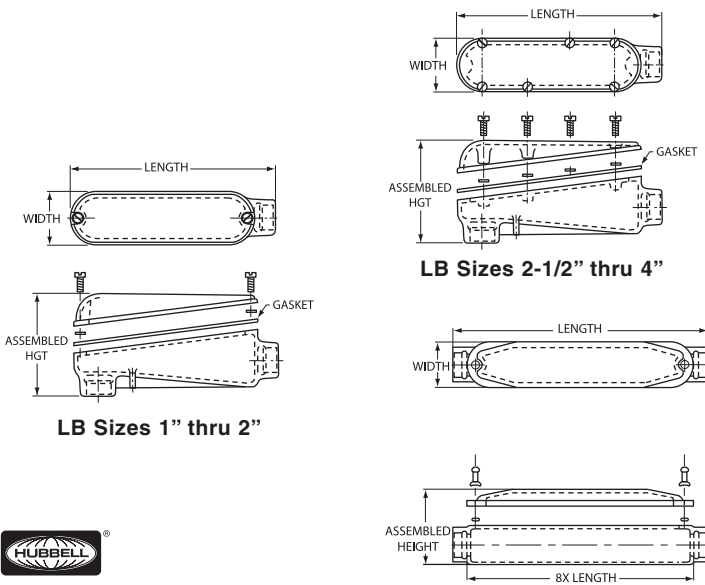
- A raised dome cover permits additional wiring room
- Furnished with captive ss screws and gasket
- LBD, C and UB Series available with built-in cable-pulling rollers on sizes 1-1/2" and larger. Add -WR to catalog number. Example MOLBD-5-WR.

Material/Finish

- Cast iron moguls are hot dipped galvanized
- Aluminum moguls are of copper-free aluminum (less than 4/10 of 1%) with electrostatically applied powder coating

| LB TYPE MOGUL CONDUIT BODY | | | | | | | |
|----------------------------|---------------|--------------|----------|-------------------|------------------|-----------------|-----------------|
| CATALOG NUMBER | KILLARK ALUM. | KILLARK IRON | HUB SIZE | LENGTH | ASSEMBLED HEIGHT | WIDTH | 6X LENGTH |
| MOLBD-1 | | MOLBD-1M | 1/2" | 5" (127) | 2-5/16" (59) | 1-5/16" (33) | 3" (76) |
| MOLBD-2 | | MOLBD-2M | 3/4" | 6-1/4" (159) | 2-5/8" (67) | 1-9/16" (40) | 4-1/2" (114) |
| MOLBD-3 | | MOLBD-3M | 1" | 9-5/8" (244) | 3-5/8" (92) | 2-1/2" (64) | 7-1/2" (191) |
| MOLBD-4 | | MOLBD-4M | 1-1/4" | 9-5/8" (244) | 3-5/8" (92) | 2-1/2" (64) | 7-1/2" (191) |
| MOLBD-5 | | MOLBD-5M | 1-1/2" | 14-7/16" (367) | 5-5/8" (143) | 3" (76) | 12" (305) |
| MOLBD-6 | | MOLBD-6M | 2" | 14-7/16" (367) | 5-5/8" (143) | 3" (76) | 12" (305) |
| MOLBD-7 | | MOLBD-7M | 2-1/2" | 22" (559) | 7-1/2" (191) | 4-1/2" (114) | 18" (457) |
| MOLBD-8 | | MOLBD-8M | 3" | 22" (559) | 7-1/2" (191) | 4-1/2" (114) | 18" (457) |
| MOLBD-9 | | MOLBD-9M | 3-1/2" | 28-1/2" (724) | 9-1/4" (235) | 5-1/2" (140) | 24" (610) |
| MOLBD-0 | | MOLBD-0M | 4" | 28-1/2" (724) | 9-1/4" (235) | 5-1/2" (140) | 24" (610) |

NOTE - For built-in cable rollers (on sizes 1-1/2" and larger), add -WR to catalog number. Example: MOLBD-5WR.



LB Sizes 1" thru 2"

LB Sizes 2-1/2" thru 4"

C Sizes

| C TYPE MOGUL CONDUIT BODY | | | | | | | |
|---------------------------|---------------|--------------|----------|-------------------|-------------------|-------------------|--------------|
| CATALOG NUMBER | KILLARK ALUM. | KILLARK IRON | HUB SIZE | LENGTH | ASSEMBLED HEIGHT | WIDTH | 8X LENGTH |
| MOC-3 | | MOC-3M | 1" | 12" (305) | 3" (76) | 2-5/8" (67) | 10" (254) |
| MOC-4 | | MOC-4M | 1-1/4" | 12-1/16" (306) | 3-5/16" (84) | 2-5/8" (67) | 10" (254) |
| MOC-5 | | MOC-5M | 1-1/2" | 18-1/8" (460) | 3-7/8" (98) | 3-3/16" (81) | 16" (406) |
| MOC-6 | | MOC-6M | 2" | 18-1/16" (459) | 4-7/16" (113) | 3-3/16" (81) | 16" (406) |
| MOC-7 | | MOC-7M | 2-1/2" | 27-1/8" (689) | 5-3/16" (132) | 4-11/16" (119) | 24" (610) |
| MOC-8 | | MOC-8M | 3" | 27-1/4" (692) | 5-15/16" (151) | 4-11/16" (119) | 24" (610) |
| MOC-9 | | MOC-9M | 3-1/2" | 35-3/8" (899) | 7-3/16" (183) | 5-11/16" (144) | 32" (813) |
| MOC-0 | | MOC-0M | 4" | 35-7/16" (900) | 7-9/16" (192) | 5-11/16" (144) | 32" (813) |

NOTE - For built-in cable rollers (on sizes 1-1/2" and larger), add -WR to catalog number. Example: MOLBD-5WR.





T TYPE



UB TYPE

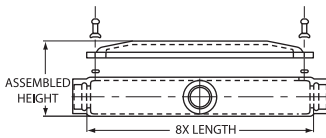
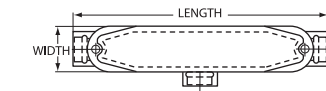
- Suitable for wet locations when used with gasketed covers.
- Federal Specification W-C-586D / A-A 50563.
- Suitable for use in hazardous location applications when installed according to NEC Articles 501.10(b), Class I, Div. 2, (Suitable for use in Class I Zone 2 applications) 502.10 and 503.10.



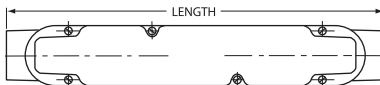
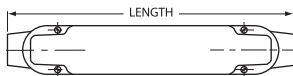
FEATURES-SPECIFICATIONS

See page F24 for Standard Materials & Finish

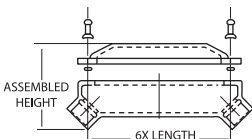
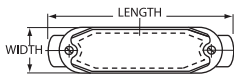
Dimensions



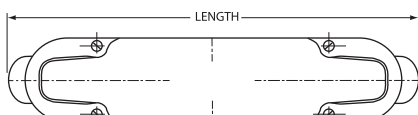
T Sizes 1" thru 2"



T Sizes 2-1/2" thru 4"



UB Sizes 1" thru 2"



UB Sizes 2-1/2" thru 4"

| T TYPE | | | | | | | |
|----------------|---------------|--------------|----------|-------------------|-------------------|-------------------|--------------|
| CATALOG NUMBER | KILLARK ALUM. | KILLARK IRON | HUB SIZE | LENGTH | ASSEMBLED HEIGHT | WIDTH | 8X LENGTH |
| MOT-3 | | MOT-3M | 1" | 12" (305) | 3" (76) | 2-5/8" (67) | 10" (254) |
| MOT-4 | | MOT-4M | 1-1/4" | 12-1/16" (306) | 3-5/16" (84) | 2-5/8" (67) | 10" (254) |
| MOT-5 | | MOT-5M | 1-1/2" | 18-1/8" (460) | 3-7/8" (98) | 3-3/16" (81) | 16" (406) |
| MOT-6 | | MOT-6M | 2" | 18-1/16" (459) | 4-7/16" (113) | 3-3/16" (81) | 16" (406) |
| MOT-7 | | MOT-7M | 2-1/2" | 27-1/8" (689) | 5-3/16" (132) | 4-11/16" (119) | 24" (610) |
| MOT-8 | | MOT-8M | 3" | 27-1/4" (692) | 5-15/16" (151) | 4-11/16" (119) | 24" (610) |
| MOT-9 | | MOT-9M | 3-1/2" | 35-3/8" (899) | 7-3/16" (183) | 5-11/16" (144) | 32" (813) |
| MOT-0 | | MOT-0M | 4" | 35-7/16" (900) | 7-9/16" (192) | 5-11/16" (144) | 32" (813) |

| UB TYPE | | | | | | | |
|----------------|---------------|--------------|----------|-------------------|------------------|-------------------|-----------------|
| CATALOG NUMBER | KILLARK ALUM. | KILLARK IRON | HUB SIZE | LENGTH | ASSEMBLED HEIGHT | WIDTH | 8X LENGTH |
| MOUB-3 | | MOUB-3M | 1" | 10-7/16" (265) | 3-7/8" (98) | 2-5/8" (67) | 7-1/2" (191) |
| MOUB-4 | | MOUB-4M | 1-1/4" | 10-7/16" (265) | 4-3/16" (106) | 2-5/8" (67) | 7-1/2" (191) |
| MOUB-5 | | MOUB-5M | 1-1/2" | 15-9/16" (395) | 5-1/8" (130) | 3-3/16" (81) | 12" (305) |
| MOUB-6 | | MOUB-6M | 2" | 15-9/16" (395) | 5-3/4" (146) | 3-3/16" (81) | 12" (305) |
| MOUB-7 | | MOUB-7M | 2-1/2" | 23-1/16" (586) | 8-1/2" (216) | 4-11/16" (119) | 18" (457) |
| MOUB-8 | | MOUB-8M | 3" | 23-5/16" (668) | 8-1/2" (216) | 4-11/16" (119) | 18" (457) |
| MOUB-9 | | MOUB-9M | 3-1/2" | 30" (762) | 10-3/8" (264) | 5-11/16" (144) | 24" (610) |
| MOUB-0 | | MOUB-0M | 4" | 30" (762) | 10-3/8" (264) | 5-11/16" (144) | 24" (610) |

NOTE - For built-in cable rollers (on sizes 1-1/2" and larger), add -WR to catalog number. Example: MOLBD-5WR.



MOLB-4



MOLB-5 thru 0



MOLB-6CG



MLB-12

- Suitable for wet locations when used with gasketed covers.
- Federal Specification W-C-586D / A-A 50563.
- Suitable for use in hazardous location applications when installed according to NEC Articles 501.10(b), Class I, Div. 2, (Suitable for use in Class I Zone 2 applications) 502-10 and 503.10.



FEATURES-SPECIFICATIONS

Applications

- Mogul fittings are normally used where the standard "O" Series conduit bodies do not offer a sufficient amount of wiring room
- For right angle bends where splices, pulls and taps are needed in a weather-proof chamber

Features

- A raised dome cover provides additional wiring room
- Furnished with cover and gasket

Material/Finish

Copper-free Aluminum
(less than 4/10 of 1%)

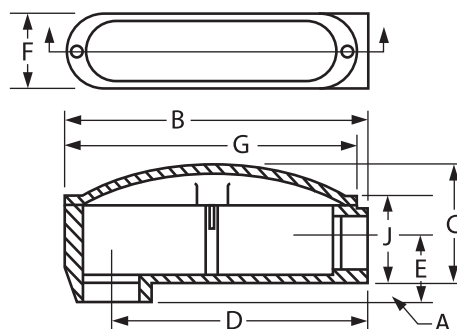
- Electrostatically applied powder coating

| MOL CONDUIT BODIES | | | | | | | | | |
|--------------------|--------------|------------------|--------------------|------------------|-------------------|-------------------|------------------|--------------------|-------------------|
| CATALOG NUMBER | CONDUIT SIZE | DIMENSIONS | | | | | | | |
| | | A | B | C | D | E | F | G | J |
| MOLB-4* | 1-1/4" | 5/16" (8) | 9-3/4" (248) | 2-3/4" (70) | 8-1/2" (445) | 1" (25) | 2-3/8" (60) | 9-1/8" (232) | 2-3/4" (70) |
| MOLB-5 | 1-1/2" | 1-5/16" (33) | 13-3/16" (335) | 4-3/4" (121) | 11-1/2" (292) | 2-3/8" (60) | 3-1/8" (79) | 12-7/8" (327) | 3-3/8" (86) |
| MOLB-6 | 2" | 1-1/16" (27) | 13-3/16" (335) | 4-1/4" (108) | 11-1/2" (292) | 2-1/2" (64) | 3-1/8" (79) | 12-7/8" (327) | 3-3/8" (86) |
| MOLB-6CG* | 2" | 1/16" (2) | 14-1/2" (368) | 5-3/4" (146) | 13" (330) | 1-3/8" (35) | 3" (76) | 14-1/8" (359) | 3-5/16" (84) |
| MOLB-7 | 2-1/2" | 1-13/16" (46) | 22-5/8" (575) | 6-1/4" (159) | 20" (508) | 3-15/16" (100) | 4-7/16" (113) | 21-13/16" (554) | 4-7/16" (113) |
| MOLB-8 | 3" | 1-13/16" (46) | 22-5/8" (575) | 6-1/4" (169) | 20" (508) | 3-15/16" (100) | 4-7/16" (113) | 21-13/16" (554) | 4-7/16" (113) |
| MOLB-9 | 3-1/2" | 1-9/16" (40) | 28-11/16" (729) | 7-7/8" (200) | 25-9/16" (649) | 4-3/16" (106) | 5-1/2" (140) | 28-5/16" (719) | 5-1/2" (140) |
| MOLB-0 | 4" | 1-9/16" (40) | 28-11/16" (729) | 7-7/8" (200) | 25-7/16" (646) | 4-3/16" (106) | 5-1/2" (140) | 28-5/16" (719) | 5-1/2" (140) |
| MLB-12* | 5" | 2-3/8" (68) | 43-1/4" (1099) | 12-1/4" (311) | 38-5/8" (981) | 6-1/4" (159) | 9" (229) | 42-1/2" (1080) | 8-11/16" (221) |

*Split cover design

| MOL BLANK REPLACEMENT COVERS AND GASKETS | |
|--|-------------|
| CATALOG NUMBER | BODY STYLE |
| MOL-450 | 1-1/4" |
| MOL-560 | 1-1/2" & 2" |
| MOL-6CG | 2" |
| MOL-780 | 2-1/2" & 3" |
| MOL-900 | 3-1/2" & 4" |

Dimensions





NECLB-6

- Suitable for wet locations when used with gasketed covers.
- Federal Specification W-C-586D / A-A 50563.
- Suitable for use in hazardous location applications when installed according to NEC Articles 501.10(b), Class I, Div. 2, (Suitable for use in Class I Zone 2 applications) 502-.10 and 503.10.



Listed - File E3397

See files for details or call Killark.

FEATURES-SPECIFICATIONS

Applications

- Specially designed to meet National Electrical Code Article 370-28(a) (2) for angle pulls where the distance between the raceway entry and the opposite wall of the fitting must be at least six times the trade diameter of the raceway.

- A pull box with easy access to conductors
- A chamber with a large opening for easy access to perform changes in the conduit system
- For 90° bends in a conduit system
- Includes cover and gasket

Features

Large cover opening (length of opening exceeds six times the trade diameter of the hub size) for easy access to conductors. Cover and gasket included

Material/Finish

Copper-free Aluminum
 (less than 4/10 of 1%)

- Electrostatically applied powder coating

F

| NECLB CONDUIT BODIES | | | | | | | | | | | | |
|----------------------|------------------------------|----------|-----------|---------|--------|----------|--------|--------|---------|----------|-----------|-----------|
| CATALOG NUMBER | REPLACEMENT COVER AND GASKET | HUB SIZE | A | B | C | D | E | F | G | H | J | K |
| NECLB-3 | NECLB-30 | 1" | 8-1/8" | 3-7/16" | 2" | 11-9/32" | 6" | 2" | 1-1/8" | 3-1/8" | 7" | 1 NPT |
| NECLB-4 | NECLB-40 | 1-1/4" | 9-7/8" | 4-1/16" | 2-3/8" | 11-5/16" | 7-1/2" | 2-1/2" | 1-3/16" | 3-11/16" | 8-5/8" | 1-1/4 NPT |
| NECLB-5 | NECLB-50 | 1-1/2" | 11-17/32" | 5-1/16" | 2-3/4" | 2-3/16" | 9" | 3-1/2" | 1-3/16" | 4-11/16" | 10-5/8" | 1-1/2 NPT |
| NECLB-6 | NECLB-60 | 2" | 14-25/32" | 6-3/16" | 3" | 2-11/16" | 12" | 4" | 1-3/16" | 5-3/16" | 13-11/16" | 2 NPT |

Dimensions

