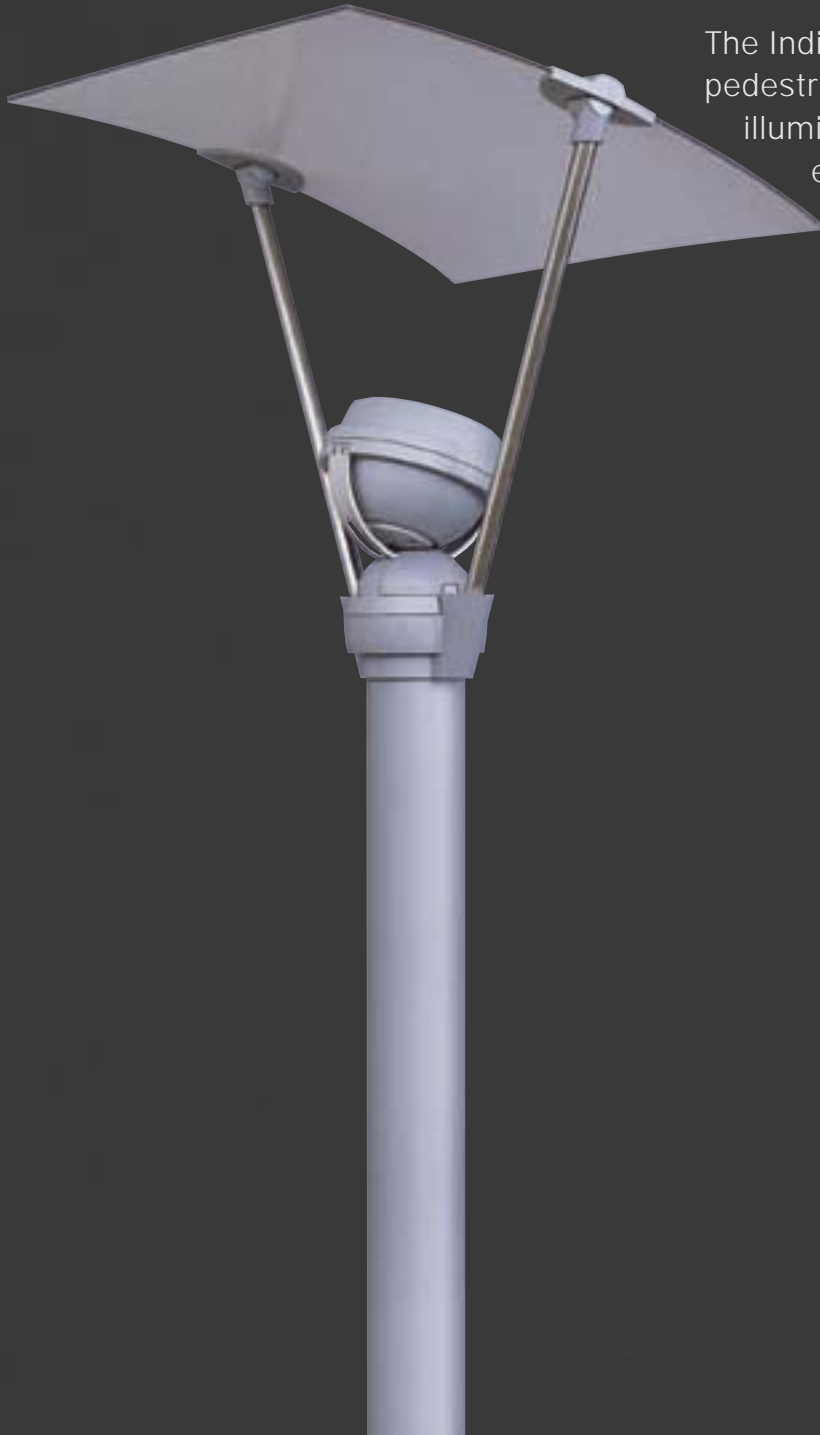


I N D I R E C T



A r c h i t e c t u r a l A r e a L i g h t i n g



The Indirect™ Luminaire is designed to light pedestrian areas with soft, low brightness illumination. The Indirect illuminates projects that require a sense of mood as much as a sense of light.

"to inspire, create and nurture
excellence in each other"

Sustainability

Our products are developed with recycling and resource management in mind. We recycle all incoming packaging materials. Our products are shipped in easy to recycle materials.

Our state of the art finishing system uses eco friendly cleansing and preparation chemicals that are harmless enough to send to the drain without further processing. Our powder coating process eliminates the release of volatile chemicals into the atmosphere.

The Indirect Luminaire like all AAL products are produced with renewable materials such as aluminum and stainless steel.

A RCHITECTURAL
A REA
L IGH TING

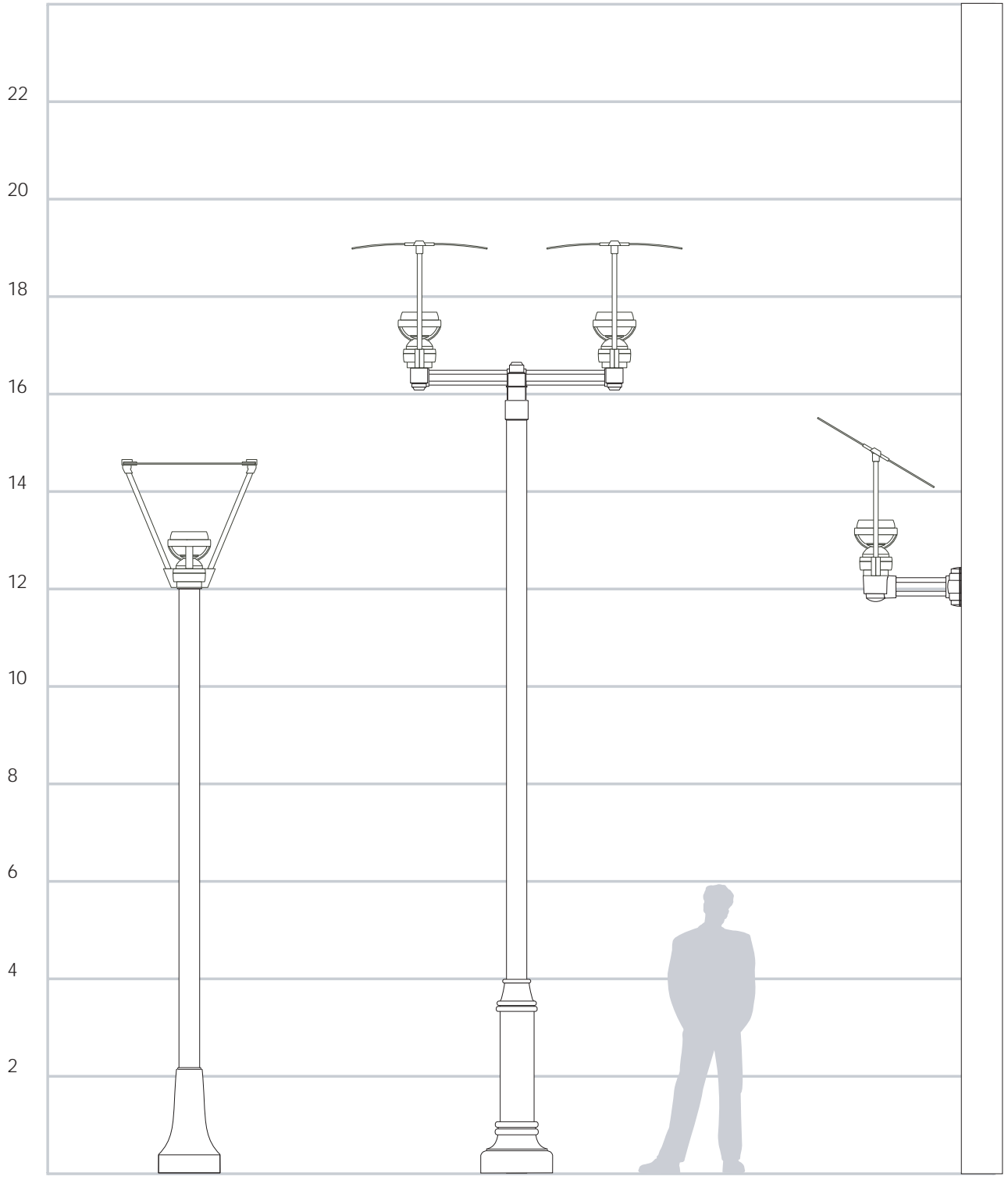


AIA Continuing Education

Printed on recycled paper

Copyright 2001
Design patents pending

I
N
D
I
R
E
C
T

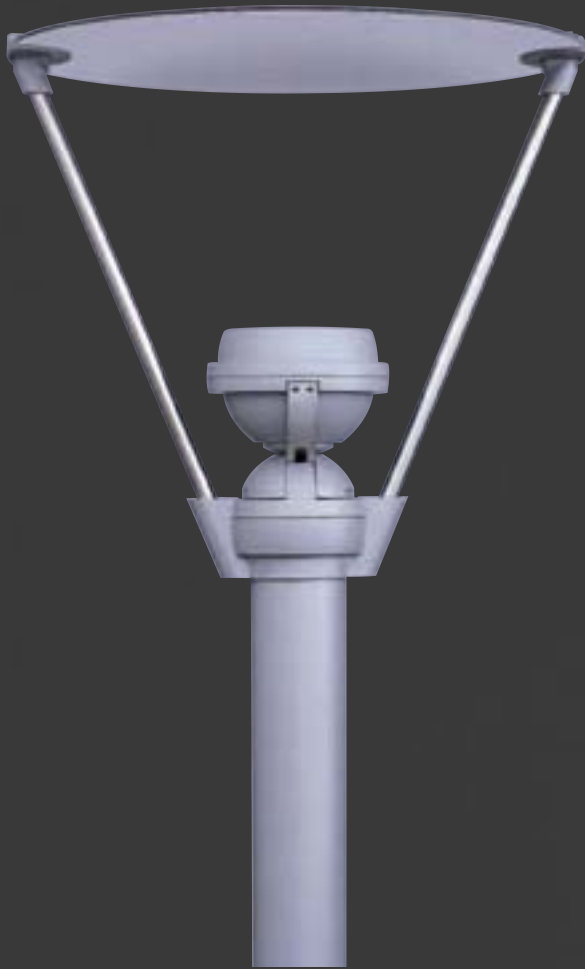


INDR
PR5-5R12, BC5-5

2-INDSQ-PMAT
DB10-5R16

INDR-WMA

I
N
D
I
R
E
C
T



INDR
Round Reflector



INDSQ
Square Curved Reflector

I
N
D
I
R
E
C
T



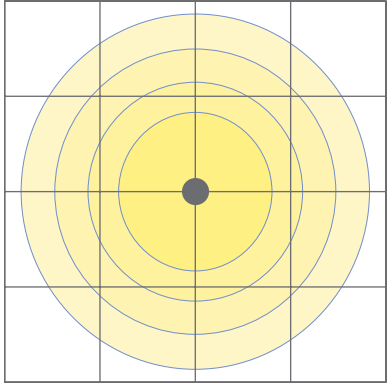
INDR-WMA
Wall Mount



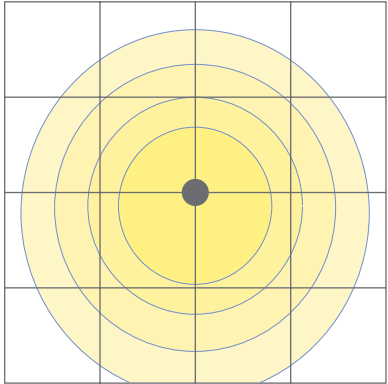
2-INDSQ-PMAT
Pole Mount Twin Arm

Reflector Adjustment

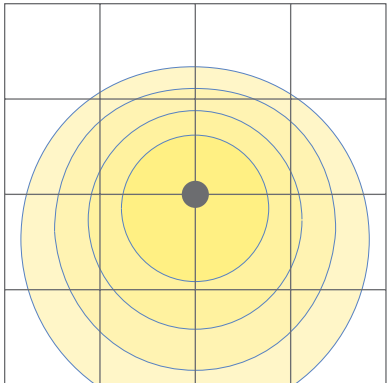
The Indirect upper reflector can be tilted 15 or 30 degrees for an asymmetrical light distribution. The locking clamp design insures consistent tilt angles on all units. The Oculus™ lamp head also tilts to focus the light beam on the center of the shade. This improves efficiency and minimizes any stray light beyond the reflector.



Horizontal position
type 5 symmetric light pattern



15° tilt position
asymmetric light pattern



30° tilt position
asymmetric light pattern

Construction

- Cast aluminum construction for corrosion resistance
- Integral ballast assembly in fixture for easy installation
- Lightweight aluminum composite reflector reduces pole stress
- Stainless steel vertical struts
- Reflector tilts 15 or 30 degrees
- The Oculus™ lamp head tilts to center the beam onto the reflector. The specular parabolic reflector focuses the light beam into the reflector upper for maximum efficiency.
- Lamp choices include:
 - 70 or 150 watt T-6 CDM metal halide for excellent color rendering with the efficiency of metal halide lamps.
 - 250 watt T-4 halogen allows dimming
 - 26 watt compact fluorescent for efficient, instant on illumination



Wind Tunnel Tested

The Indirect was laboratory tested at wind speeds of 140MPH/225KPH, (which was the maximum speed of the test equipment). The Indirect's robust, mechanical design exhibited no shaking or twisting during the extreme test conditions.



Ordering Information

Indirect™

	FIXTURE	OPTIONS	COLOR	POLE
	1	2	3	4
EXAMPLES	INDR-70MH	LAMP70	CRT	PR5 5R10-188
	INDSQ-150MH	SR	BLK	PR5 5R18-188

1

CATALOG NO.	ROUND REFLECTOR	Slips over a 5" /127MM round open top pole
INDR-70MH	Indirect with 30" diameter round reflector, 70 watt metal halide ballast 120/277 volt, for use with a clear, T-6 (G12 base) ceramic metal halide lamp.	
INDR-70MHEB	Indirect with 30" diameter round reflector, 70 watt electronic metal halide ballast 120/277 volt, for use with a clear, T-6 (G12 base) ceramic metal halide lamp.	
INDR-150MH	Indirect with 30" diameter round reflector, 150 watt metal halide ballast 120/208/240/277 volt, for use with a clear, T-6 (G12 base) ceramic metal halide lamp.	
INDR-26CF	Indirect with 30" diameter round reflector, electronic 120/277 volt ballast, for use with a 26 watt compact fluorescent lamp.	
INDR-INC	Indirect with 30" diameter round reflector, with mini cand socket for an incandescent T-4 halogen lamp up to 250 watts.	

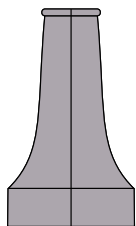
1

CATALOG NO.	SQUARE REFLECTOR	Slips over a 5" /127MM open top pole
INDSQ-70MH	Indirect with 30" square, curved reflector, 70 watt metal halide ballast 120/277 volt, for use with a clear, T-6 (G12 base) ceramic metal halide lamp.	
INDSQ-70MHEB	Indirect with 30" square, curved reflector, 70 watt electronic metal halide ballast 120/277 volt, for use with a clear, T-6 (G12 base) ceramic metal halide lamp.	
INDSQ-150MH	Indirect with 30" square, curved reflector, 150 watt metal halide ballast 120/208/240/277 volt, for use with a clear, T-6 (G12 base) ceramic metal halide lamp.	
INDSQ-26CF	Indirect with 30" square, curved reflector, electronic 120/277 volt ballast, for use with a 26 watt compact fluorescent lamp.	
INDSQ-INC	Indirect with 30" square, curved reflector, with mini cand socket for an incandescent T-4 halogen lamp up to 250 watts.	

NOTE: All ballasts are factory wired for 277 volts.

4

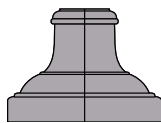
Optional Cast Base Covers



BC5-5

14" X 24"

355 X 610MM



BC6-5

17" X 12"

430 X 305MM

5" Round Aluminum Poles

CATALOG NUMBERS	WT	WALL	HEIGHT	STEADY WIND				GUST FACTOR (1.3)			
				70/91	80/104	90/117	100/130	70/91	80/104	90/117	100/130
PR5 5R10-188	48	.188"	10'/3.1M	26.0	20.8	16.0	12.6				
PR5 5R12-188	55	.188"	12'/3.7M	22.5	17.2	13.2	10.5				
PR5 5R14-188	61	.188"	14'/4.3M	18.2	13.5	10.5	8.2				
PR5 5R16-188	68	.188"	16'/4.9M	14.5	11.0	8.5	6.6				
PR5 5R18-188	75	.188"	18'/5.5M	12.0	9.0	6.8	5.2				
PR5 5R20-188	81	.188"	20'/6.1M	9.8	7.4	5.5	4.0				
PR5 5R12-250	67	.250"	12'/3.7M	27.0	22.7	18.8	15.5				
PR5 5R14-250	76	.250"	14'/4.3M	24.5	20.4	16.7	13.7				
PR5 5R16-250	85	.250"	16'/4.9M	21.8	18.0	14.8	11.5				
PR5 5R18-250	93	.250"	18'/5.5M	18.9	15.5	12.2	9.7				
PR5 5R20-250	102	.250"	20'/6.1M	16.4	13.6	10.9	8.2				

Bolt circle: 10"/255mm Base diameter: 12.5"/320MM

Bolts are 5/8" X 21" (16MM X 535MM) for OAH of 14'/14.3M or less

Bolts are 3/4" X 24" (19MM X 610MM) for OAH of 16'/4.9M

Options

2

CATALOG NO.

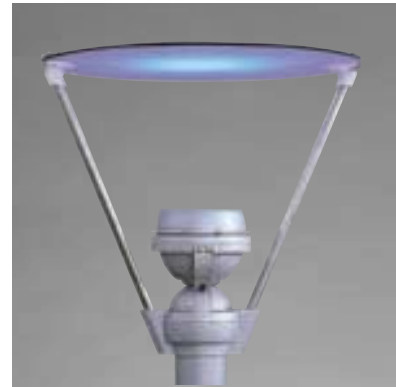
LAMP70	Phillips 70 watt clear, T-6 ceramic metal halide lamp, CDM70/T6/830
LAMP150	Phillips 150 watt clear, T-6 ceramic metal halide lamp, CDM150/T6/830
347	120/277/347 magnetic ballast available for the 150 metal halide lamps.
AD5	Cast aluminum arm adapter for the PMAT arm to slip over a 5" /127mm pole.



CDC
Center deflector cone for INDR (round reflector) only..



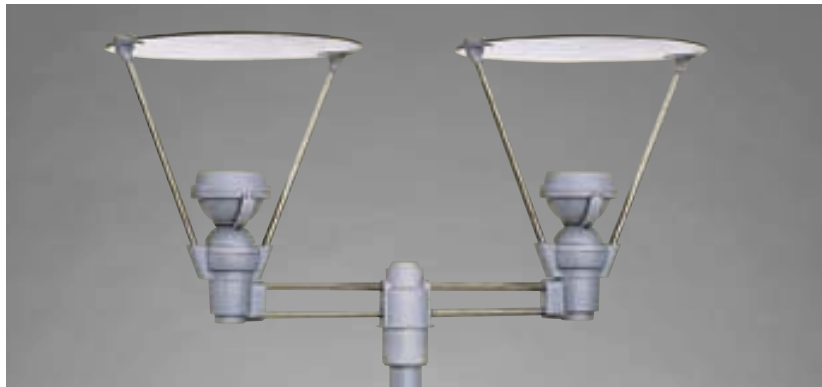
SR
Two cast aluminum rings



CFH
Color filter holder, glass filter supplied by others



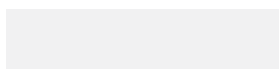
WMA
Wall mounted arm



PMAT
Twin pole mounted arm, slips over a 4" /102MM pole or tenon

3

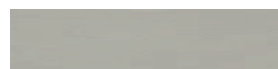
COLOR RAL and custom colors available. Please submit a RAL color number or color chip for custom colors.



WHT White



BLK Black



MAT Matte Aluminum



GALV Galvanized



LGY Light Gray



CRT Corten



DGN Dark Green



VGR Verde Green

Specifications

T
C
E
R
I
D
N
I

UPPER REFLECTOR

The upper reflector shall be a light weight aluminum composite. The reflector shall be finished in a white, fluoropolymer finish. The reflector shall be attached to the cast aluminum pivot joints and secured with four stainless steel bolts. Two cast aluminum, adjustable knuckles shall connect the reflector assembly to the vertical, stainless steel struts. The struts are #316 stainless steel with a minimum .250" wall thickness. The struts shall have threaded connections for attachment to the upper reflector and lamp module.

LAMP MODULE

The light source shall be enclosed in an Oculus™ lamp housing. The housing shall be die cast aluminum. The front cover is secured with four cap screws for relamping and internal access. The front glass element is clear, tempered glass. The front cover and electrical module are sealed with memory retentive, molded silicone gaskets.

The parabolic reflector shall be prefocused to illuminate the upper reflector. The lamp module swivels, to center the beam on a tilted reflector, by loosening two stainless steel cap screws. All internal and external hardware is stainless steel.

ELECTRICAL MODULE

The ballast is mounted on a prewired plate with a quick disconnect plug. Magnetic metal halide ballasts are high power factor, rated for 30°F starting. The 70 watt electronic metal halide ballast is rated for -30°F starting, sound rating A, 120 or 277 volt. Sockets are pulse rated porcelain, bi-pin, G12 for T-6 lamps. A porcelain screw base for the mini-cand T-4 halogen lamp. The compact fluorescent shall have an electronic, transformer 120/277 volt.

FINISH

Fixture finish consists of a five stage pretreatment regimen with a polymer primer sealer, oven dry off and top coated with a thermoset super TGIC polyester powder coat finish. The finish shall meet the AAMA 605.2 performance specification which includes passing a 3000 hour salt spray test for corrosion resistance.

The reflector shall be painted white. The vertical struts are #4 brushed stainless steel. All other fixture parts shall be finished in the same specified color.

CERTIFICATION

The fixture shall be listed with ETL and U.L. for outdoor, wet location use, UL1598 and Canadian CSA Std. C22.2 no.250. IP=66

WARRANTY

Fixture shall be warranted for three years. Ballast components carry the ballast manufacturer's limited warranty.



ARCHITECTURAL
AREA
LIGHTING

14249 Artesia Blvd
La Mirada, CA 90638
(714) 994-2700 • fax (714) 994-0522
www.aal.net



Lighting, Inc.

Copyright 2001 Architectural Area Lighting. Design patents pending.

MADE IN U.S.A.